



Halloween 22

THE PHYSIC GARDEN CHELSEA

HALLOWEEN FAMILY THEATRE 'HUNT FOR THE LOST DRAGON EGG'

Join Z as she battles the wilderness and defies death in pursuit of tracking down the very last dragons egg known to exist! Adventure through the Garden and move fast through the bush to solve puzzles, crack codes and take-on tasks to hunt down the mythical prize. But beware, poxy poachers are lurking and if they reach the egg before you do - the world could be in deep dragon danger!



[Find out more](#)

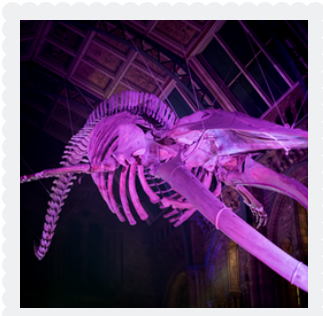
BROOMSTICK WORKSHOPS & PUMKIN CARVING

Craft your own broomstick using plant materials foraged at the Chelsea Physic Garden. Learn about the craft of broomstick-making from around the world and customise your broomstick to suit your personality. Learn about pumpkin plants and explore the Garden through autumn. Then enter the spooky garden shed where and transform pumpkins into your Halloween friends. All materials and tools will be provided, and each participant will get one pumpkin to take home.



HALLOWEEN AT THE NATURAL HISTORY MUSEUM

Explore the galleries after dark, away from the day-dwelling crowds, meet the more misunderstood members of the natural world and shake your bones on the dance floor with a cocktail in hand at our silent disco. This relaxed, drop-in event is the perfect opportunity for museum lovers to celebrate the creepiest night of the year. Ticket price includes a digital photo from Magic Memories and entry to the world-renowned Wildlife Photographer of the Year exhibition. Fancy dress is encouraged.



[Find out more](#)



Halloween 22

SWEET TRICK OR TREATS

Pick up your sweet treats at Daylesford Farm Shop on Sloane Avenue. From Toffee Apples to Chocolate spiders, frogs and mummies, pumpkin biscuits, meringue ghosts. Marshmallows for the fire pit and a Pecan pie for the whole family to feast on!



[Find out more](#)



HALLOWEEN GIFTS

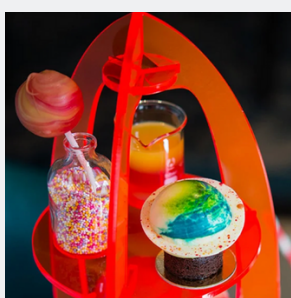
For those little ones who need to avoid the sugar Blue Almonds on Walton Street has beautiful little gifts from little forest animals, stuffed pumpkins and board books.

[Find out more](#)

IN FOCUS TOUR: HALLOWEEN AT THE V&A

Discover the eerie secrets that lie within the collection, from Medieval cursed vases to haunted Victorian beds. With origins dating back to the ancient Celts, Halloween allows children and grownups alike to revel in the pleasure of being frightened. The V&A collection provides the perfect opportunity to learn about how we scared one another in the past and how Halloween celebrations have changed throughout history.

[Find out more](#)



SCI-FI AFTERNOON TEA AT THE AMPERSAND HOTEL

Head to Il Gufo on Brompton Road, for an exclusive 10% off on all the new SS22 collection from April 11th until April 30th and an easter present of an up-cycled bandana for all who enter the store! While stocks last. The boutique is open Monday to Saturday from 10am to 1pm and from 2pm to 6pm (from April 15th to April 18th the store will be closed for the Bank Holiday).

[Find out more](#)



SPOOKTACULAR WALTON STREET

Don't stop there! Wander down to RH London at 65 Walton Street for the most Spooktacular Halloween display. The perfect place for your halloween selfie!